



JIGSAW TRADING

Day Trading Without Charts

15th January, 2014

Peter Davies – Jigsaw Trading



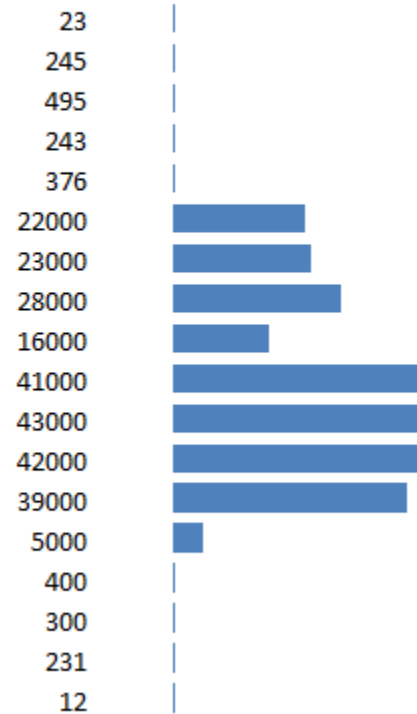
Volume Profile

Where is support? Where is Resistance?

Price

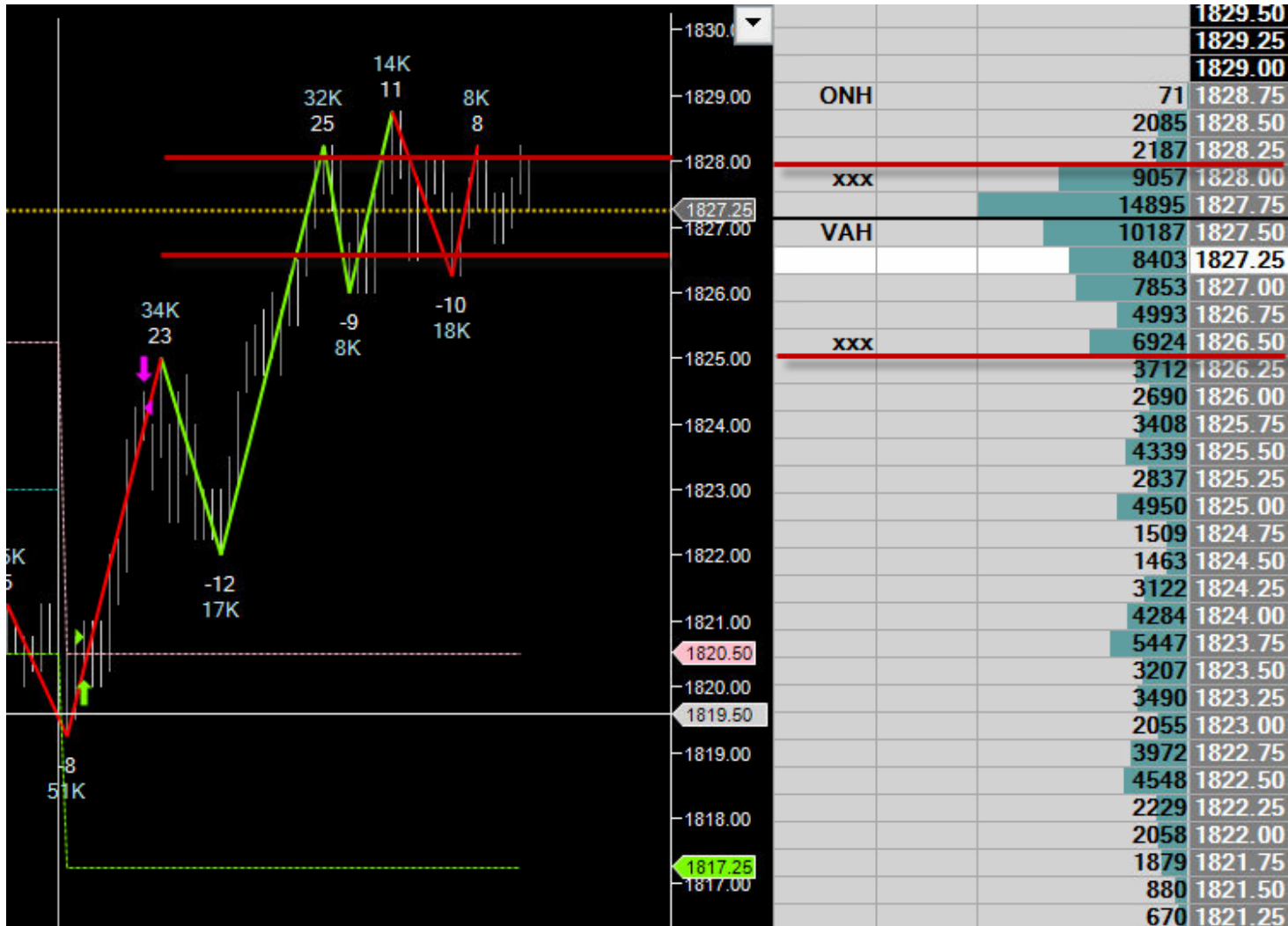


Volume at Price



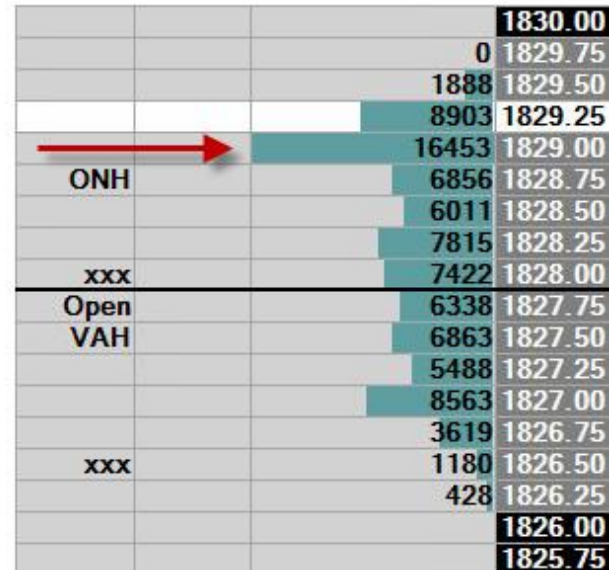
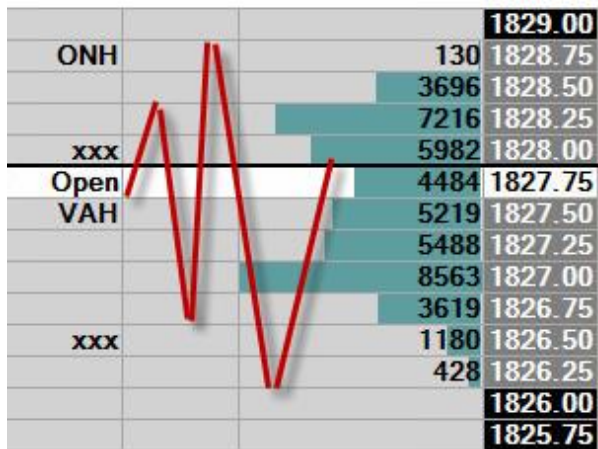
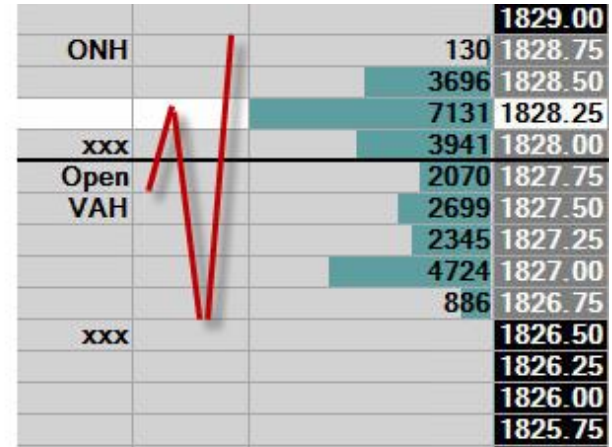
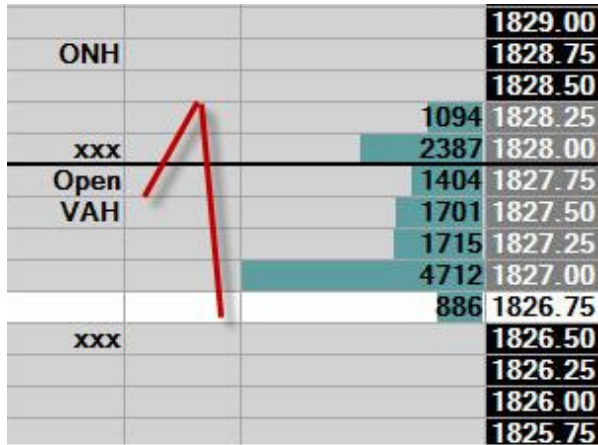


Walk Thru – 7th Jan, 2013





Opening Moves – 7th Jan





Building Volume – 7th January





Moving up – 7th January

			1833.50
LIS			1833.25
			1833.00
	1L		1832.75
YH			1832.50
			1832.25
			1832.00
	1L		1831.75
			1831.50
			1831.25
			1831.00
	2L		1830.75
		171	1830.50
		6681	1830.25
		11863	1830.00
		13457	1829.75
		16741	1829.50
		12573	1829.25
		19514	1829.00
ONH		7733	1828.75
	5S	6031	1828.50
		7815	1828.25
xxx		7422	1828.00

← 'hurdle' identified pre-market

← In before the break as momentum came in. A better trade would have been a long close to 1829 but I didn't get a fill there (only 500 more traded since last slide)

← Why risk more than this?



The Break – 7th January

LIS			1833.25
			1833.00
	1L		1832.75
YH			1832.50
			1832.25
			1832.00
	1L	212	1831.75
		2782	1831.50
		4774	1831.25
		3865	1831.00
		6974	1830.75
		4609	1830.50
		11206	1830.25
		12531	1830.00
		13461	1829.75
		16741	1829.50
		12573	1829.25
		19514	1829.00
ONH	2S	7733	1828.75
		6031	1828.50
		7815	1828.25
xxx		7422	1828.00

Lower volumes on the way up, indicating a more rapid move common when one side bails out.

At this point, we really should not break down back through 1830.50 if we are going to carry on up. Shorts from that area just got burnt, they may cover if still in. Longs will want to keep the ground they fought over.



New range – 7th January

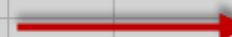
LIS			1833.25
			1833.00
	1L		1832.75
YH		496	1832.50
		5306	1832.25
		5158	1832.00
		5705	1831.75
		9029	1831.50
		8908	1831.25
		3886	1831.00
	1S	6974	1830.75
		4609	1830.50
		11206	1830.25
		12531	1830.00
		13461	1829.75
		16741	1829.50
		12573	1829.25
		19514	1829.00
ONH		7733	1828.75
		6031	1828.50

LIS			1833.25
			1833.00
		342	1832.75
YH		4970	1832.50
		10550	1832.25
		19804	1832.00
		25508	1831.75
		16477	1831.50
		10368	1831.25
		3886	1831.00
		6974	1830.75
		4609	1830.50
		11206	1830.25
		12531	1830.00
		13461	1829.75
		16741	1829.50
		12573	1829.25
		19514	1829.00
ONH		7733	1828.75
		6031	1828.50



			1834.75
		336	1834.50
		6188	1834.25
		9499	1834.00
		2952	1833.75
LIS		3213	1833.50
		2239	1833.25
		10313	1833.00
YH		12928	1832.75
		16766	1832.50
		21972	1832.25
		26492	1832.00
		27463	1831.75
		16493	1831.50
		10368	1831.25
		3886	1831.00
		6974	1830.75
		4609	1830.50
		11206	1830.25
		12531	1830.00

		229	1834.75
		3776	1834.50
		12492	1834.25
		12942	1834.00
		6324	1833.75
LIS		7498	1833.50
		4183	1833.25
		10579	1833.00
YH		12928	1832.75
		16766	1832.50
		21972	1832.25
		26492	1832.00
		27463	1831.75
		16493	1831.50
		10368	1831.25
		3886	1831.00
		6974	1830.75
		4609	1830.50
		11206	1830.25
		12531	1830.00





To Be Continued

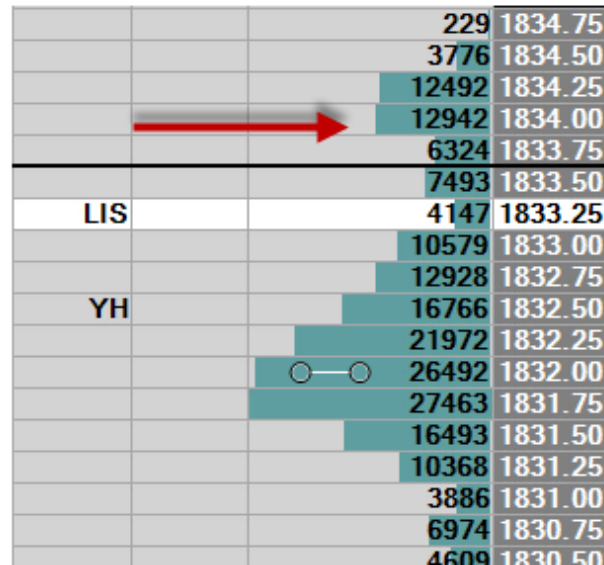
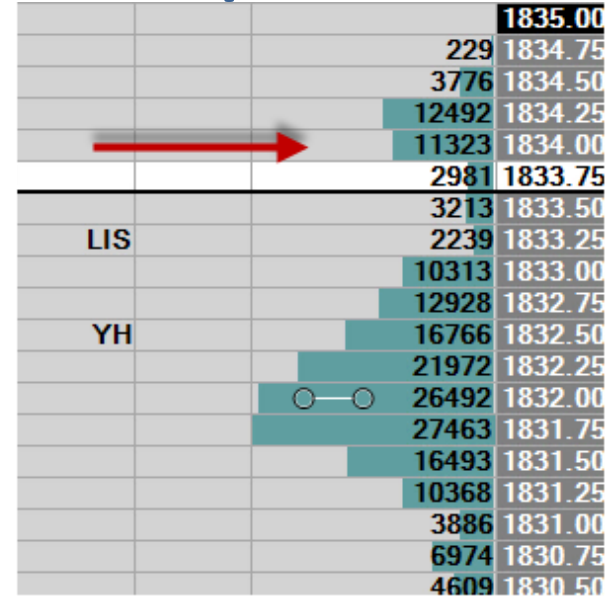
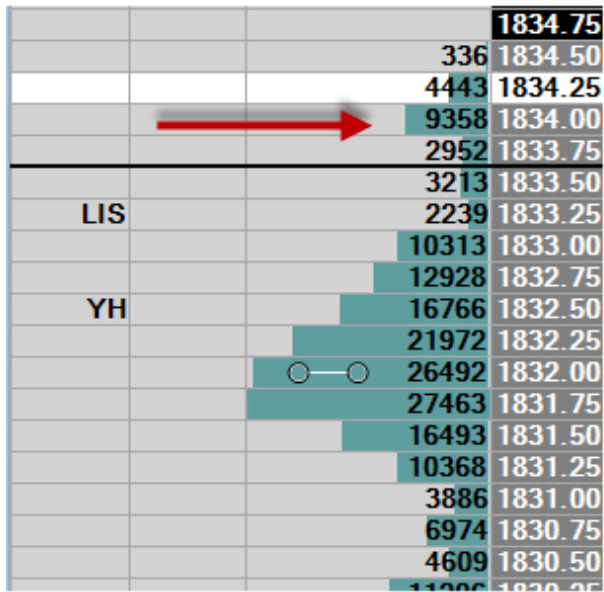


Reversals & Pullback Points



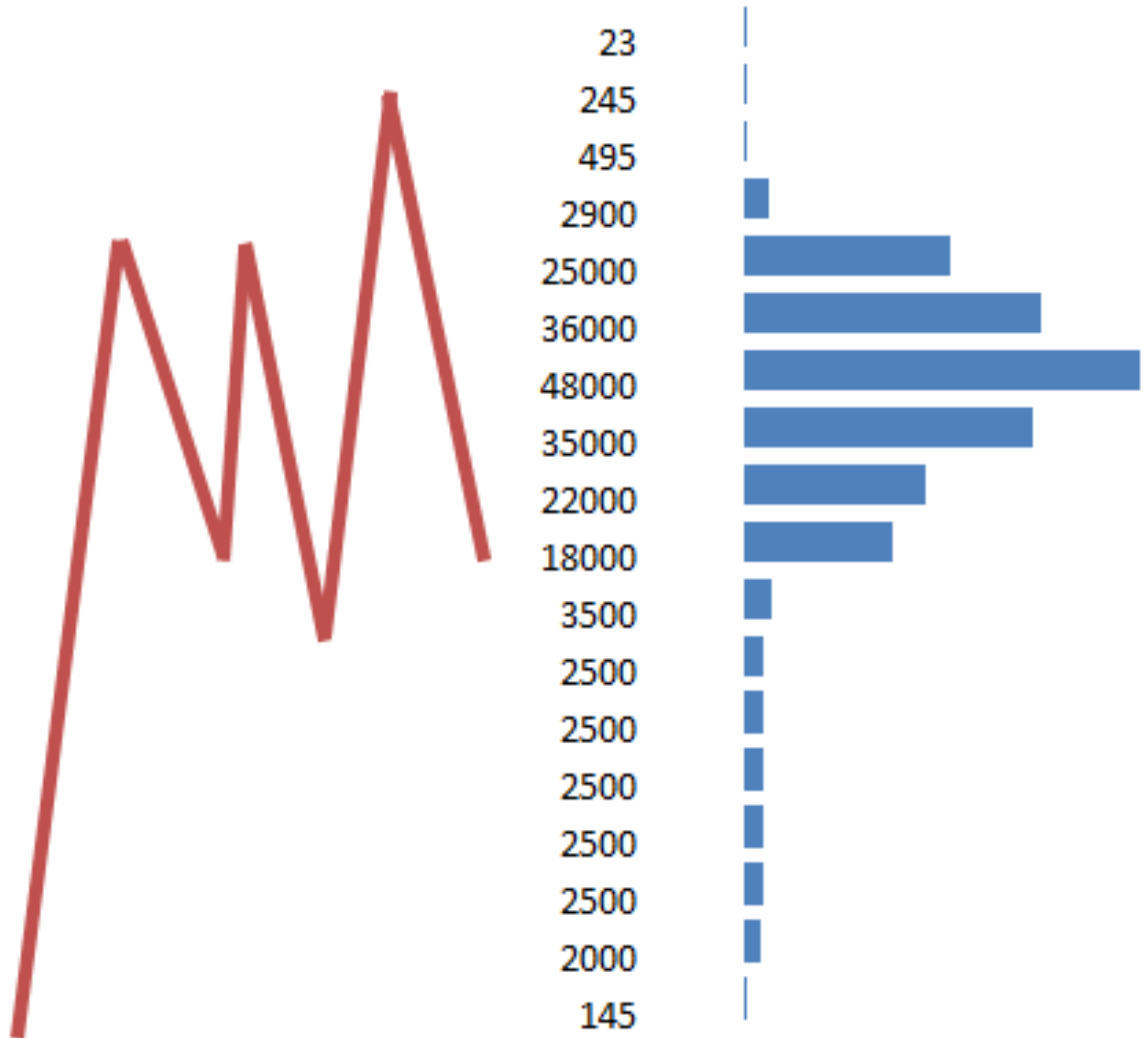


Head Fakes - Absorption





Head Fakes – No Interest





Summary

- High volume areas/ranges
 - If you suspect a range – give it time to develop
 - On larger ranges, watch/scale at the POC
 - Scalp both sides, scalp one side, scalp & scale
- High Volume Nodes
 - Hold & continue, Turn into High volume areas, Reverse
 - Watch how it crosses over that price
- Consider what happened before the node developed
- Consider how far away it is from the area of high volume
- Reversal is always the least likely scenario
- Use Order Flow/Intermarket analysis to confirm trades
- Get a good price, don't worry about being right all the time
- Thinner/thicker markets – you need to adjust slightly



Q&A

Follow-up Video. Pullbacks, head fakes:

<http://www.jigsawtrading.com/day-trading-without-charts-follow/>

New Customer 10% discount coupon code:

<http://www.jigsawtrading.com/useful-links/buy-now/>

Code: 09F4F9EC Exipry: 20th January, 2014



Thank you

Peter Davies – Jigsaw Trading

peterdavies@jigsawtrading.com

www.jigsawtrading.com